

# EXHIBIT A



Ellis Avenue

(Chestnut) US Hwy 21 & 178 Bypass

501.34'

EXXON

CRUISER'S

RESTAURANT

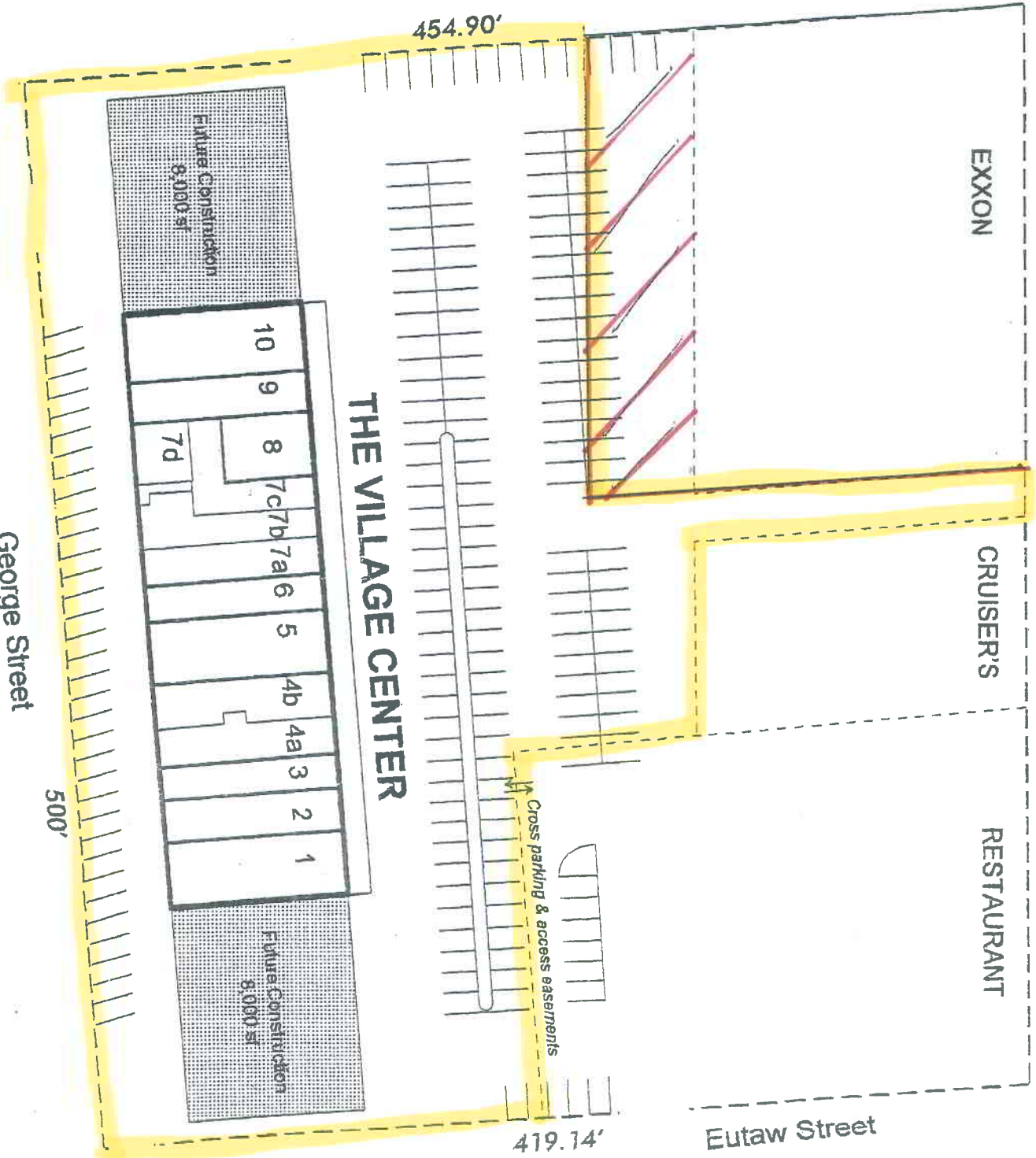
Eutaw Street

454.90'

419.14'

500'

George Street



Future Construction  
8,000 sf

Future Construction  
8,000 sf

THE VILLAGE CENTER

- 10
- 9
- 8
- 7c/7b
- 7a
- 6
- 5
- 4b
- 4a
- 3
- 2
- 1

7d

Cross parking & access easements