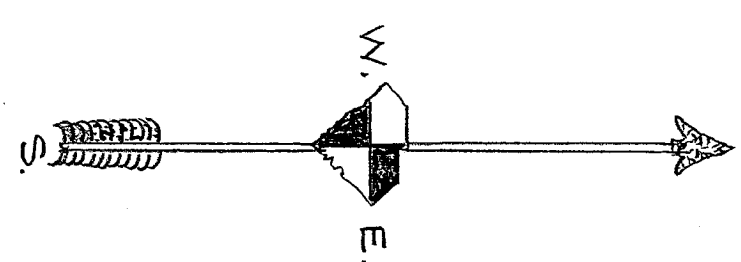
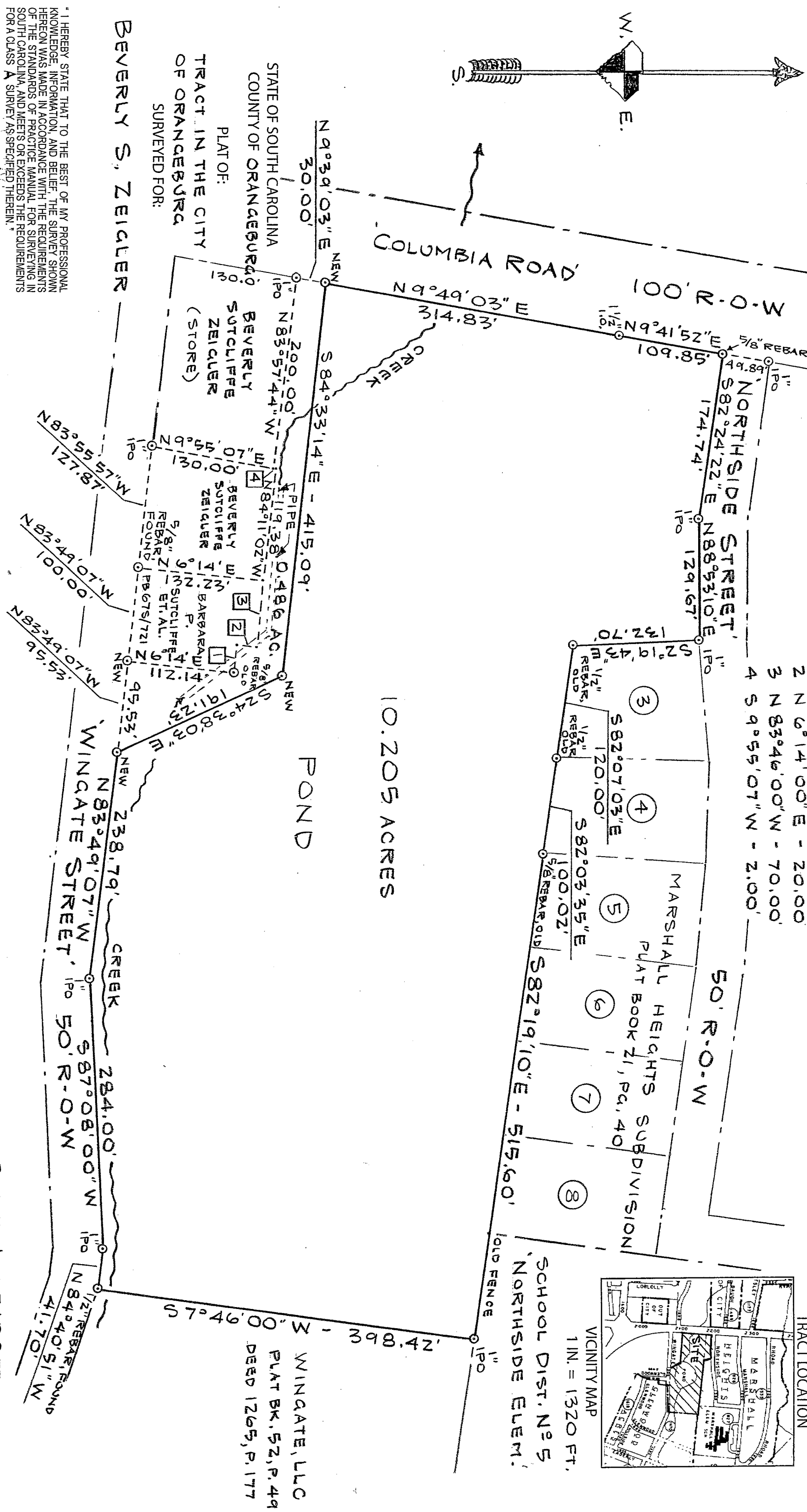


MAGNETIC NORTH OF RECORD
W (1975)



LINE DATA: 1 N 83°46'00"W - 30.00'
 2 N 6°14'00"E - 20.00'
 3 N 83°46'00"W - 70.00'
 4 S 9°55'07"W - 2.00'

'NEW' CORNERS ARE 5/8 IN. REBAR, PLACED



10.205 ACRES

POND

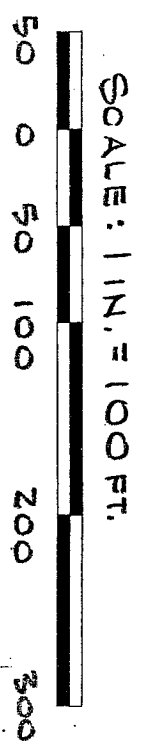
"I HEREBY STATE THAT TO THE BEST OF MY PROFESSIONAL KNOWLEDGE, INFORMATION, AND BELIEF, THE SURVEY SHOWN HEREON WAS MADE IN ACCORDANCE WITH THE REQUIREMENTS OF THE STANDARDS OF PRACTICE MANUAL FOR SURVEYING IN SOUTH CAROLINA, AND MEETS OR EXCEEDS THE REQUIREMENTS FOR A CLASS A SURVEY AS SPECIFIED THEREIN."

W.J. Westbury

W.J. WESTBURY
 S.C. REG. L.S. NO. 11608

W.J. WESTBURY AND ASSOCIATES
 POB 1102, ORANGEBURG, S.C. 29116 (803) 739-0320

DATE: OCTOBER 14, 2014



TMS 0174 13 10 009 P/g